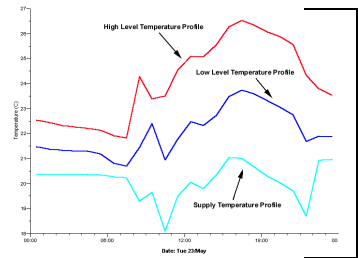
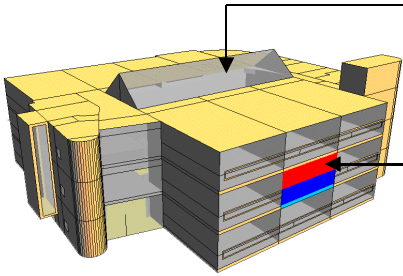


# WIT IT Building, Waterford Ireland

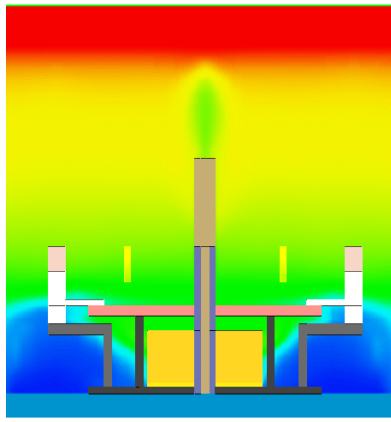
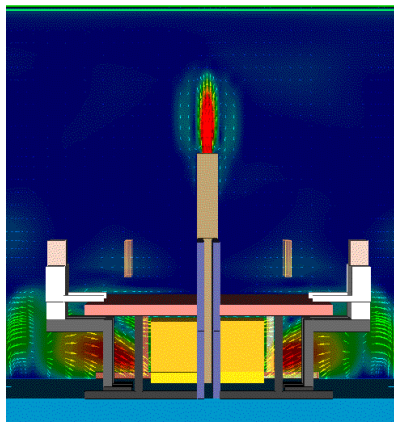
## Summary:

- 18 computer laboratories with no mechanical cooling
- Kalwall (transparent insulation) façade
- Underground ducting for free cooling and heating
- Displacement ventilation
- Passive exhaust via atrium
- Innovative “hot flue” desk configuration passively cools computer laboratories

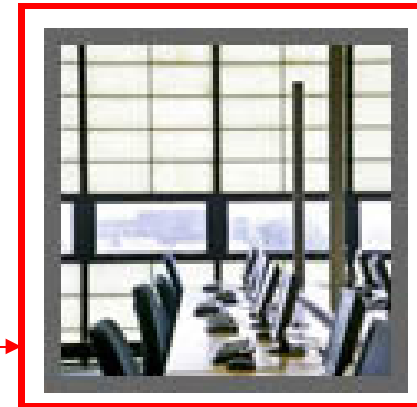
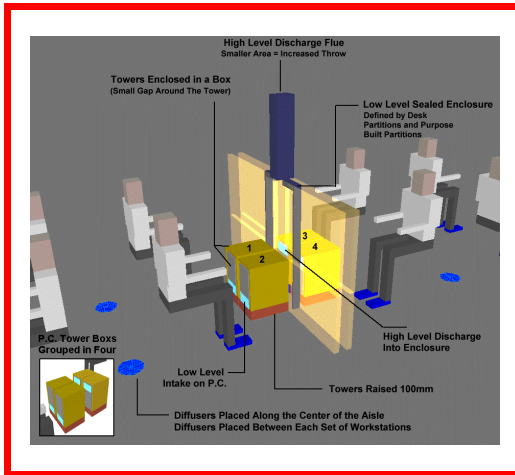


Thermal assessment of displacement ventilation

Passive exhaust via central atrium



Optimum “Hot Flue” desk configuration identified by CFD analysis



Optimum flue configuration in use within the building

In conjunction with:

A & D Wejchert architects

For and on behalf of:

