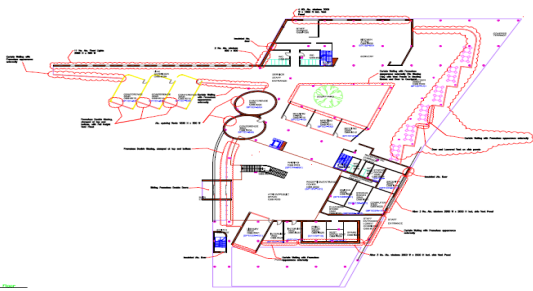
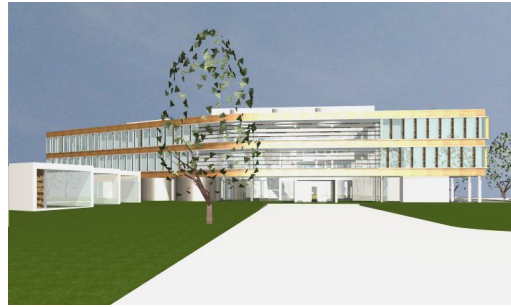


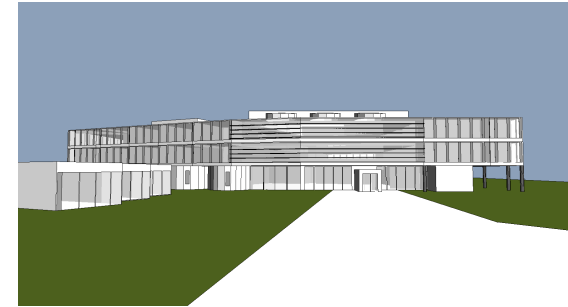
Dept. of Education Offices, Athlone Ireland



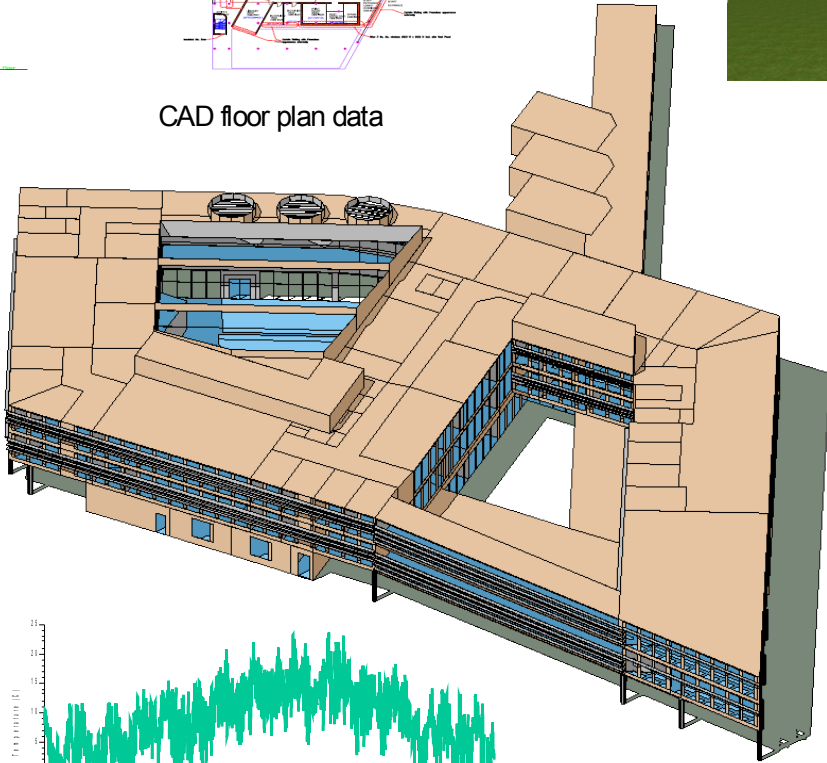
CAD floor plan data



Architectural visualisation



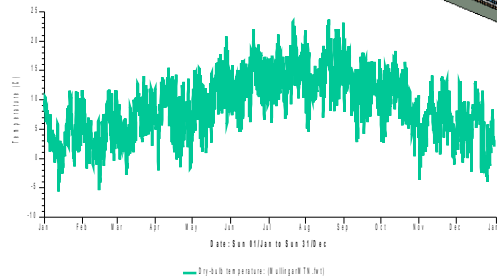
<VE> model visualisation



Suncast solar shading

Summary:

- Passive solar / low energy office design
- Natural ventilation performance
- External solar shading design
- Solar control glazing selection
- Occupant comfort / occurrence of overheating
- Dynamic thermal, solar shading and bulk airflow simulation



Annual external climate data for region

Location	Air temperature (C)	
	hours > 28.00	% of time
L0: Meeting Room	0	0
L0: Meeting Room	0	0
L0: Meeting Room	0	0
L0: Meeting Room, Conference	0	0
L0: Meeting Room, Conference	19	2
L0: Meeting Room, Conference	9	1
L0: Meeting Room, Conference	24	2

Table showing hours of overheating occurrence

In conjunction with:



For and on behalf of:

