



iCD

Intelligent Community Design

*3D Sustainable
Urban Design
and Early Stage
Masterplanning Tool*



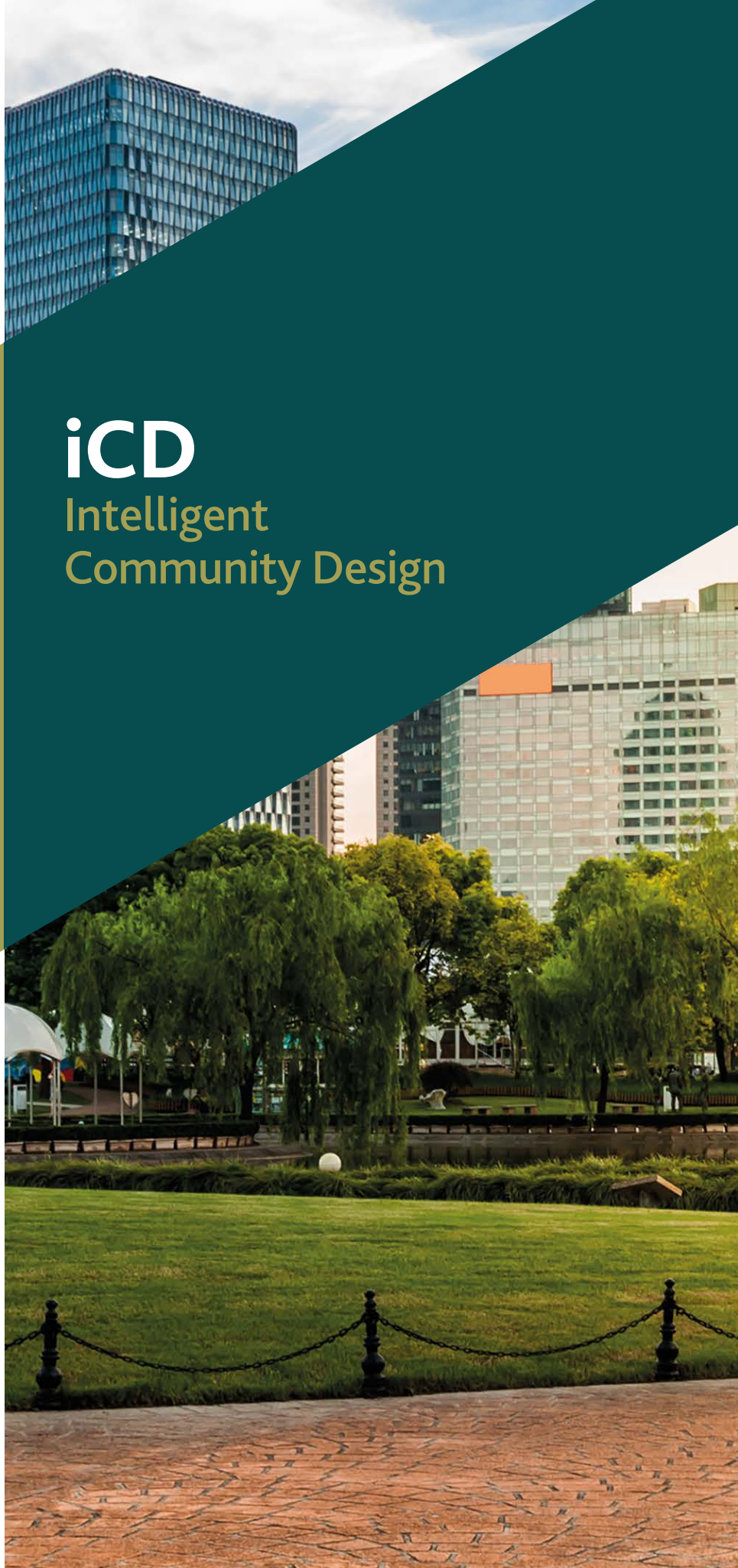
iCD
INTELLIGENT
COMMUNITY DESIGN

SECTOR: IES ICL

DATE: April 2019

COUNTRY: Global

www.iesve.com



iCD

Intelligent Community Design

Climate Ready Masterplanning for Campuses, Cities and Communities

Consider a masterplan... There are 50 -70 buildings, a mix of existing and new build, but you can't get quick feedback on sustainability criteria. You need better collaboration within your team, you are unable to quickly create energy models of all the buildings and there is an overwhelming amount of data all held in different tools.

This is where iCD comes in... Using the latest digital twin technology, iCD makes it possible to undertake sustainable masterplanning right from the earliest project stages, even when data is sparse or non-existent. Providing analysis which is completely scalable from a simple campus, to a wider community or city.

With the proven IES Virtual Environment (VE) simulation engine at its heart, used by top engineering firms across the world for over 20 years, you can be assured of robust and reliable results.

Collaborate and share information across the whole project team, make quick, effective decisions and use verifiable data to save money, reduce environmental impact and create healthier, more resilient developments, buildings and communities which are future-proofed against climate change.

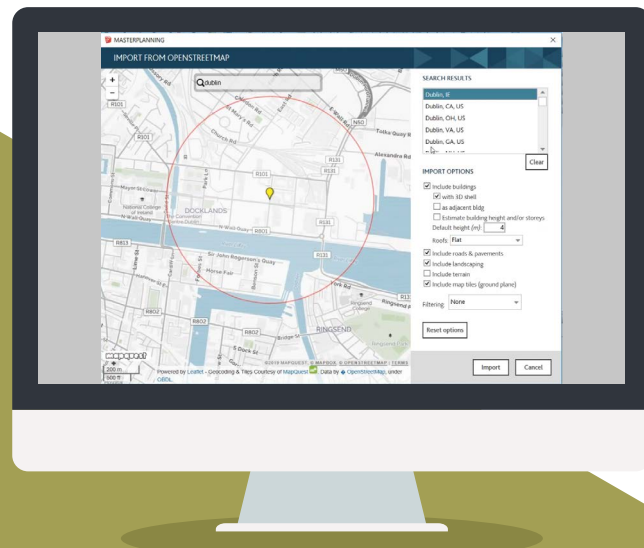
For new developments, retrofit projects or a combination of the two, you don't need to stop at stage one, you can plan and visualise multiple changes to the development over time.

The iCD combines integrated analysis across:

- Massing & Form
- Geography
- Energy
- Water
- Renewables
- Utilities

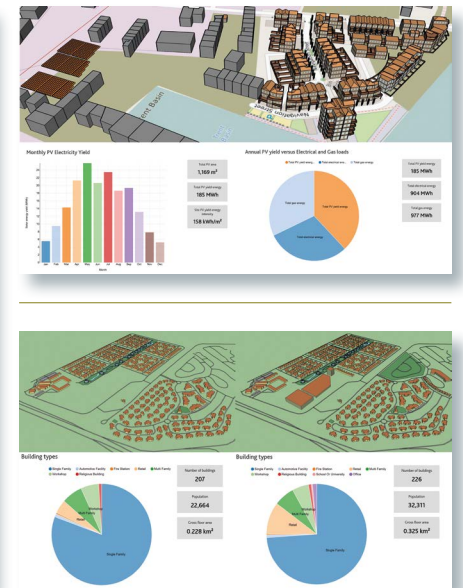
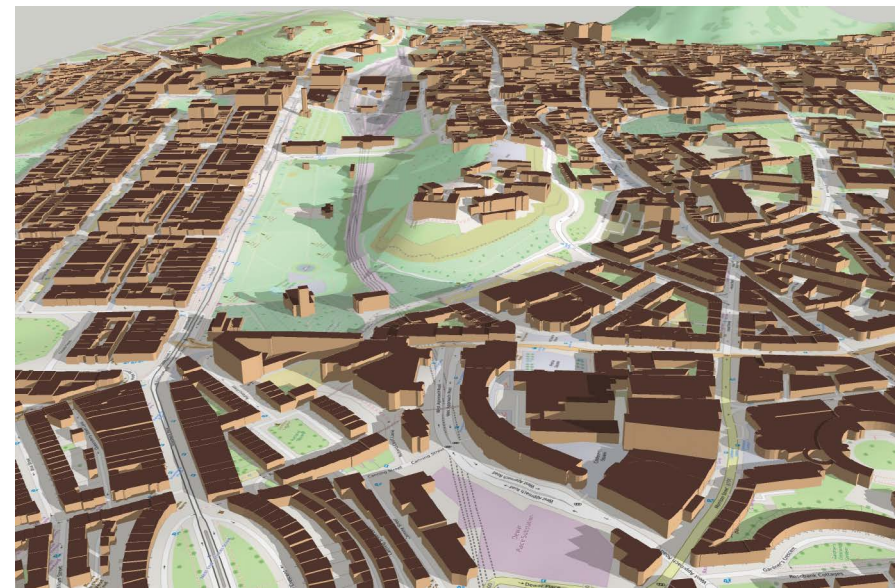
Ideal for early stage design

- Easy and quick to use
- Generate virtual data to fill data gaps
- Rapid results
- Visualise impacts of decisions immediately
- Ready-made reports
- Robust and reliable
- Built-in option comparison



Imagine a New Way of Working

With iCD, Urban Planners, Designers, Sustainability Consultants and MEP Engineers can now collaborate and exchange ideas quickly and easily through one central tool.



Create a 3D masterplanning model in minutes using OpenStreetMaps or other open source datasets, and exchange data with your project team or client, by connecting your iCD model to the iCIM interactive visualisation platform.

Ensure your team is always working from the most up to date information, using the central model to provide access to real-time updates as decisions are made and the design evolves.

Using the same model across the team to perform different analysis, your sustainability consultant can undertake energy modelling and other environmental analysis.

Meanwhile, the urban designer can investigate the massing and morphing considerations and the engineer can aggregate demands to look at distribution of supply across buildings from the single shared platform.



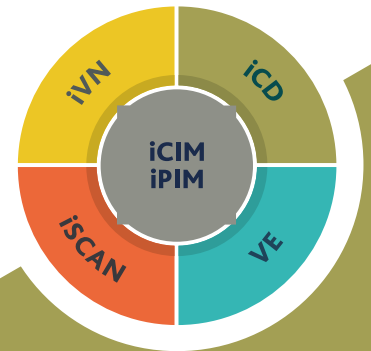
Intelligent Communities Lifecycle

Citizens, Companies, Campuses, Communities, Cities, Countries

The ICL is a cutting-edge suite of digital twin technologies that enable energy efficient and sustainable communities, campuses, portfolios, buildings and local networks.

Connect iCD with other ICL tools

- Centrally Visualise, Communicate and Engage with All (iCIM)
- Undertake PV Assessment and detailed evaluation of energy systems (iVN)
- Incorporate Real-Time Operational Data (iSCAN)



To find out how iCD can help you connect the dots on your masterplan, visit www.iesve.com/icl/icd

PLEASE CONTACT

E-mail enquiries@iesve.com

Call 0141 945 8500

www.iesve.com

EUROPE | NORTH AMERICA | ASIA | AUSTRALIA