



iSCAN

Intelligent Control and Analysis

*A single platform
to optimise the
operational
performance
of buildings*



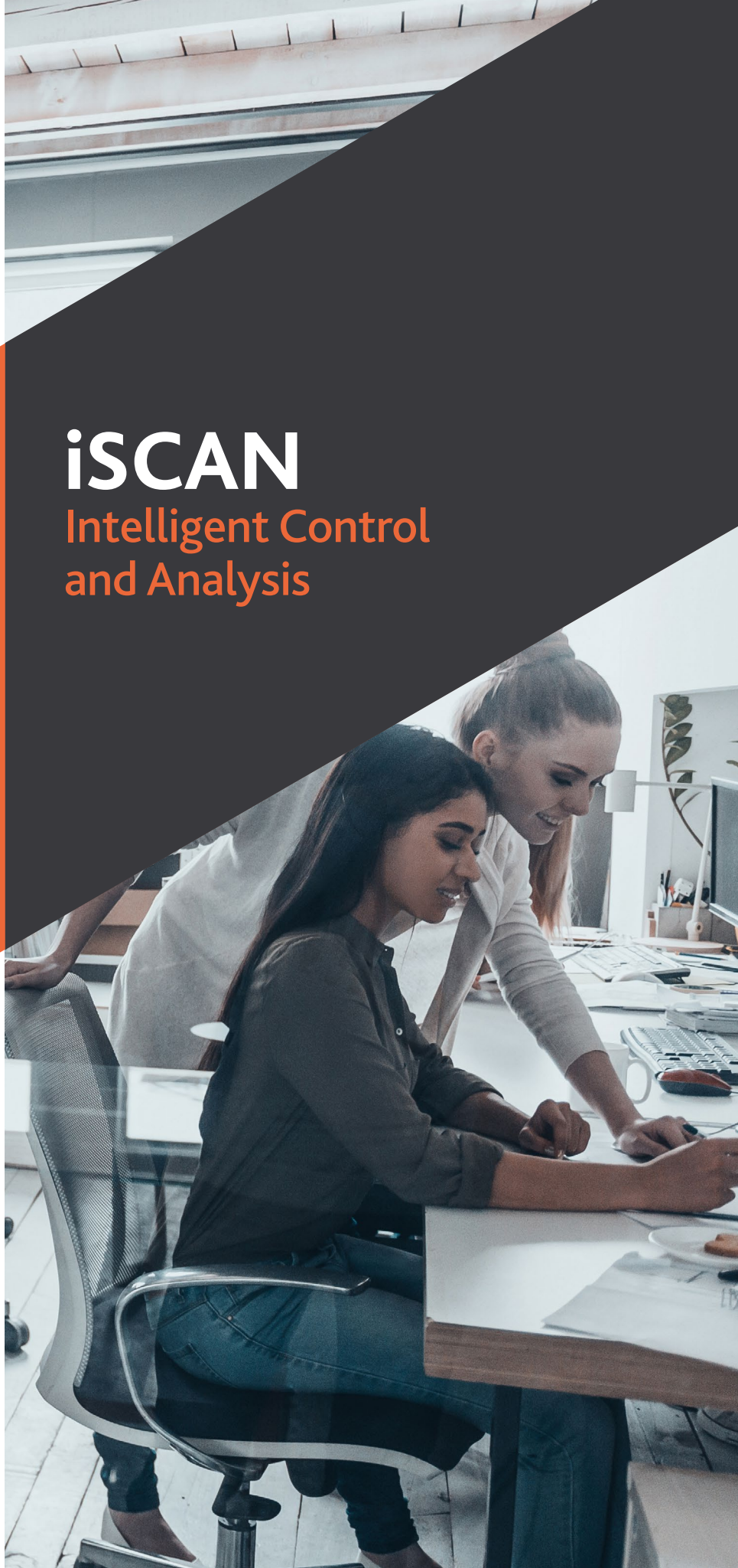
iSCAN
INTELLIGENT CONTROL
AND ANALYSIS

SECTOR: IES ICL

DATE: November 2019

COUNTRY: Global

www.iesve.com



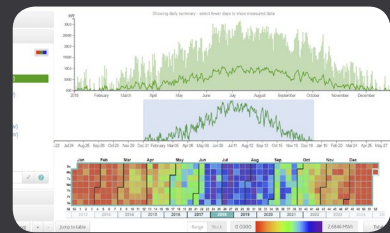
iSCAN

Intelligent Control and Analysis

Struggling to cut through the clutter of building data and meet zero carbon targets?

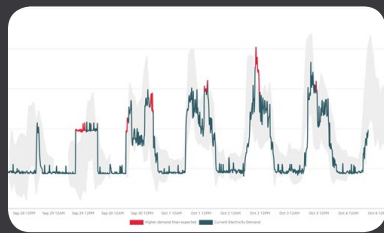
For those involved in the operation of buildings understanding the data collected can be a minefield. iSCAN takes the pain out of portfolio data management, providing intelligent insights and analysis across all sources of energy use, generation and internal comfort in a single platform.

iSCAN allows you to consolidate a range of time-series data from different BMS systems, utility meters, sensors and portable data loggers in one platform. And then organise and analyse this data to gain hidden insights to improve building or portfolio operation. Any data source, format and time series can be organised and tagged.



Advanced Analytics to uncover hidden inefficiencies, save energy and reduce costs

- Cross analyse data from different sources in a single pane view
- Automatically uncover hidden inefficiencies, save energy and reduce costs
- Hone in on areas that need attention and tune control strategies
- Identify patterns in historic usage
- Benchmark performance
- Create bespoke data rules and alerts
- Design bespoke dashboards around your KPIs and create Command Centres



AI and Machine learning to learn from historical data and ensure continuous fault detection

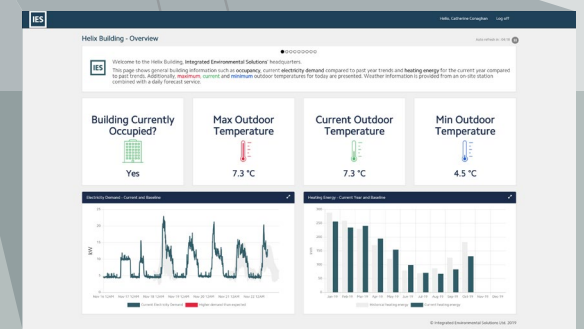
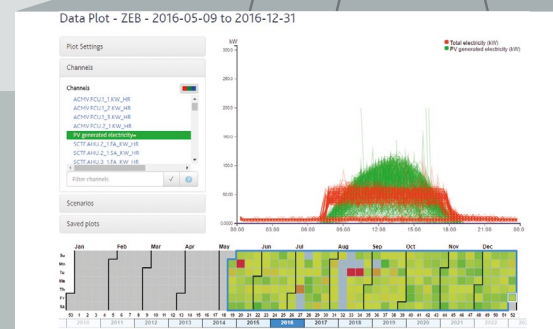
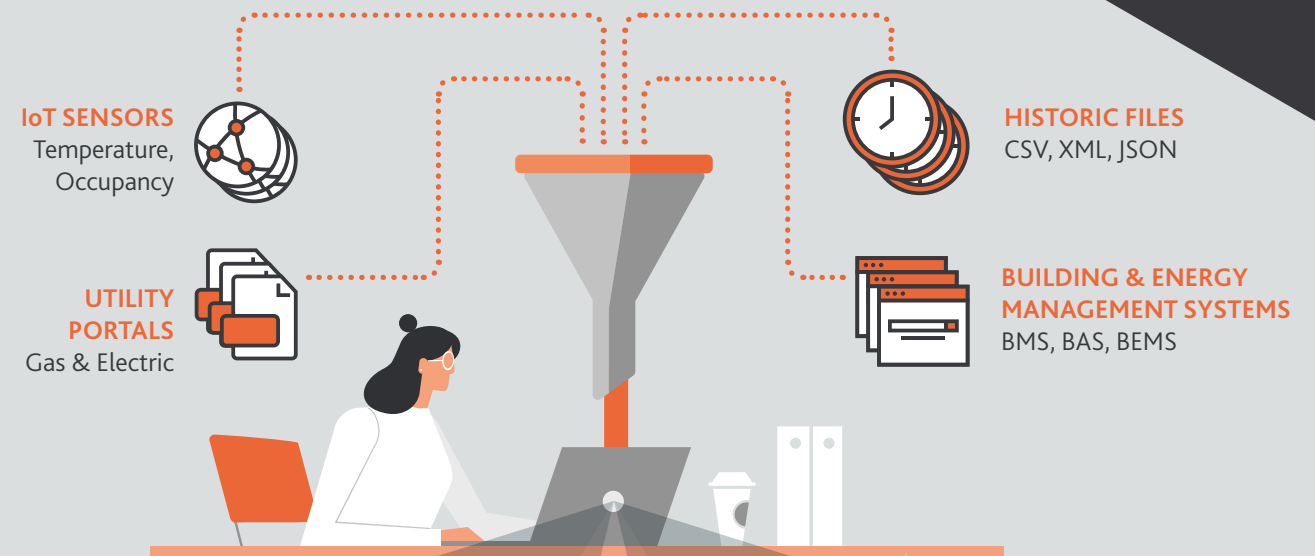
- Smart tools to review data and fill data gaps
- Learn from historical operational data
- Automate the process of organising and tagging multiple data sources
- Link historical data to current weather to prevent operational drift
- Ensure assets and renewables are performing as they should
- Predict normal operational range and identify faults



Connect to VE physics-based energy model to explore 'what if' future scenarios

- Create Digital Twins by linking with IES' industry leading VE building simulation software
- Explore 'what if' future scenarios
- Virtually test retrofit options and ECMs
- Create business cases for energy efficiency or retrofit projects
- M&V capabilities to track and monitor whether expected benefits have been realised
- Create customised Python scripts to automate reports and data input

With **iSCAN** you can make sense of any building data



SINGLE PANE VIEW



One login to central platform



Organise and tag multiple data sources, formats and time intervals



Cross analyse data from different data sets



Smart tools to review data and fill data gaps



Unlimited bespoke data rules, alerts and dashboards



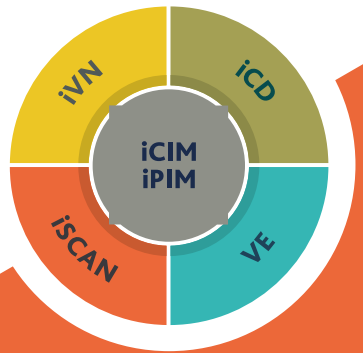
Intelligent Communities Lifecycle

Citizens, Companies, Campuses, Communities, Cities, Countries

The ICL is a cutting-edge suite of digital twin technologies that enable energy efficient and sustainable communities, campuses, portfolios, buildings and local networks.

Connect iSCAN with other ICL tools

- Combine with IESVE physics based simulation to develop detailed calibrated Digital Twin models (VE)
- Integrate existing operational utility, meter and building systems data into urban designs and masterplans (iCD)
- Develop linked community and portfolio models to deliver vital information to key stakeholders at global, national, regional, campus and individual building level (iCIM/iPIM)
- Couple real-time metered data to create live network models for demand response (iVN)



To find out how iSCAN can help you connect the dots with your building data, visit www.iesve.com/icl/iscan

PLEASE CONTACT

E-mail enquiries@iesve.com
Call 0141 945 8500

www.iesve.com

EUROPE | NORTH AMERICA | ASIA | AUSTRALIA