

Local Advisory Team - LATs Meeting

A LAT is established in each NewTREND project country, under **dissemination and exploitation activities**, to ensure a robust link between target user groups and the NewTREND project. Through several meetings, important market inputs are transferred into the NewTREND project; at the same time, the collected knowledge of the project is transmitted to the local stakeholders that are the potential end users of the main NewTREND results.

The main tasks of a LAT are:

- to **provide advice from the end user's point of view** regarding the project results
- to **support the organization** of local dissemination events
- to **act as multiplier** and aggregation system for stakeholders
- to **help the project results to reach the market**
- to **secure development of the project results** beyond the project's lifetime

LATs are **informal collective working groups**, formed by representatives of the target groups both from the public and private side, established by leveraging previously existing networks, representative of all key target user groups, such as:

- **Technical organizations**
- **Financial organizations**
- **Administration and policy makers**
- **Occupants**



LAT meetings are held at key moments of the project life, LATs meet to assess and discuss the status of the project and offer advice. The intent is to ensure the development of project results that really meets the needs of the target groups by providing actionable feedback to the NewTREND consortium.



NewTREND

NEW Integrated Methodology and **Tools** for **Retrofit** Design Towards a Next Generation of **EN**ergy Efficient and Sustainable Buildings and **Districts**

13

partners



7

countries



3

demo sites



36

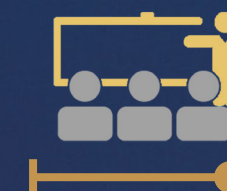
months



NewTREND Training Activity

To facilitate the adoption of the toolset developed in NewTREND, training courses for users will be **organized in each country**. The course is targeted to **decision makers** and **technicians**, with different specific contents.

Half a day of training "**in person**" for **Technicians and Decision makers**



How to use **NewTREND toolset** and **methodology** and to perform a **simulation** on a small urban area

"**Web-based**" (material to be uploaded and **user credentials** to try the tool)



How to develop **retrofit scenarios** at **building and urban scale** by using NewTREND toolset and methodology on-line

The training course will allow to **collect a more direct feedback** from users that will test the toolset on field and a **demo version of the toolset** will be made available online.



Introduction to the NewTREND methodology and phases of a retrofitting project



Introduction to the NewTREND toolset, user roles and project management functionalities



NewTREND software use – project set up and simulation on a use case



iesve.com



www.granlundgroup.com



www.london.edu



www.abud.hu



www.drjakobenergyresearch.de



www.hm.edu/en



www.iisbe-rd.it



www.univpm.it



www.santcugat.cat



regeneralevante.com



www.stamtech.com



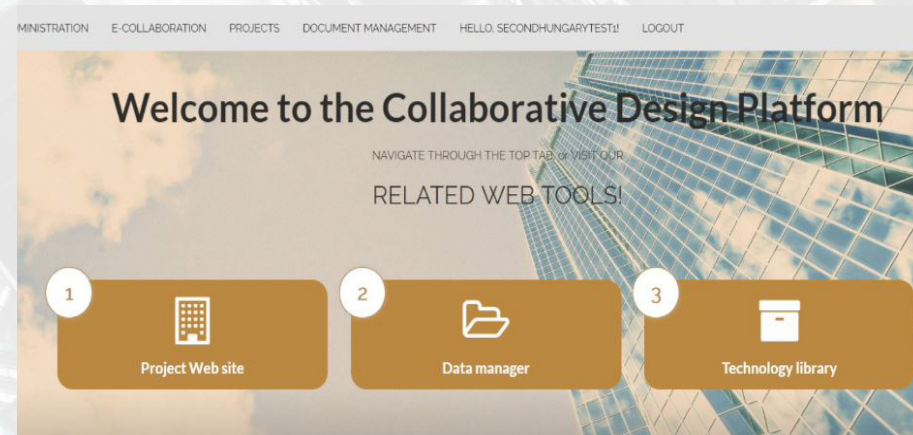
www.ucd.ie



www.ucc.ie/en/cppu

This project has received funding from the European Union's Horizon 2020 research and innovation programme under grant agreement n. 680474.

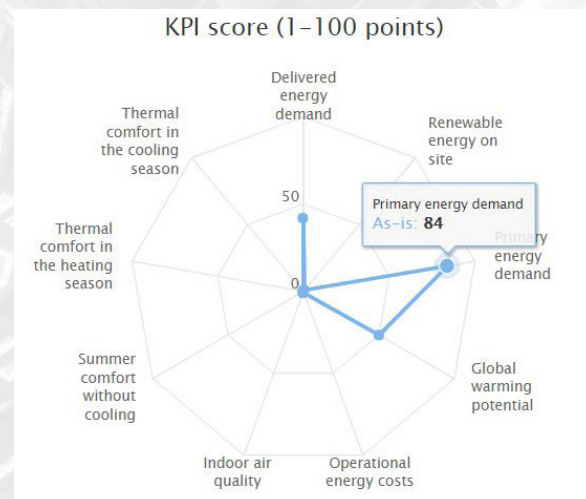
NewTREND Platform: Operational TOOLS



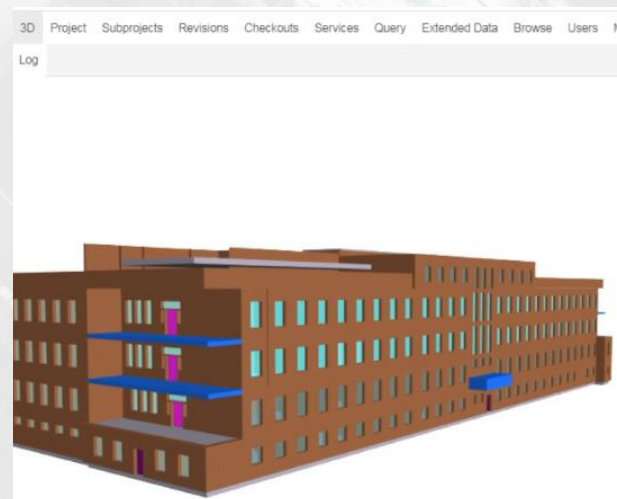
Collaborative
Design Platform

Is the **front-end software tool** and the main interface for users. Here takes place **Project Creation** through a cityGML file; this step is crucial as it is functional to all the project activities, it requires the input of time-scope, project name and description.

Users can simulate **Buildings** and **Districts** at their **current state (As-Is)...**
...or create **new potential scenarios (What-If).**



City GML file gives a basic description of the project scope and can be **complemented by BIM Models (.ifc files)**. Buildings can be seen in **3D** and their features navigated.



Simulation and
Design Hub

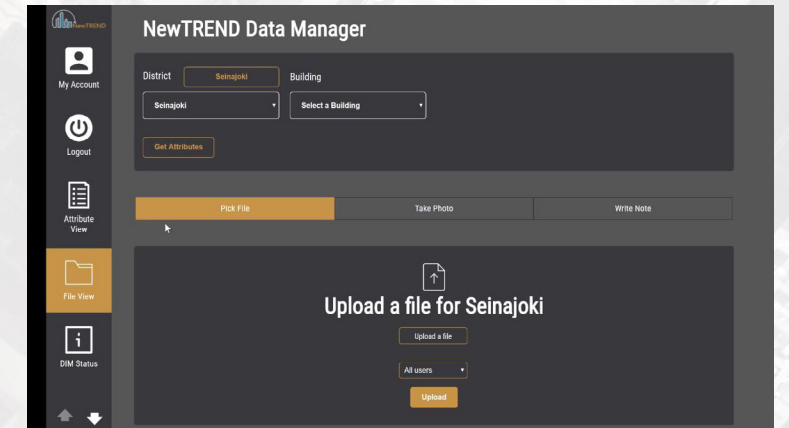
Here take place **dynamic simulations** and calculations to create future retrofit scenarios.

Users can display in the CDP the results of the dynamic simulations. **Simulation supports retrofit design and decision making along the retrofitting process.**

TOOLS: CDP - DM and SDH - DIM Server

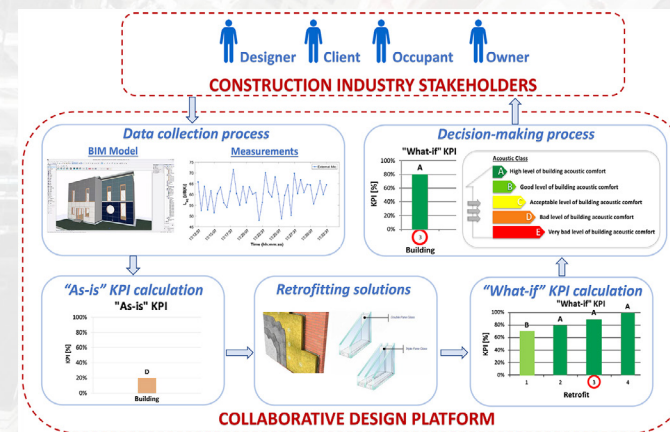


Data Manager



Collects data required for the creation of a District Information Model for neighborhood and buildings. User can update the model with **additional attributes, pictures, files and notes**. Data Manager sends collected details to the DIM Server for secure storage.

Acoustic Comfort Module



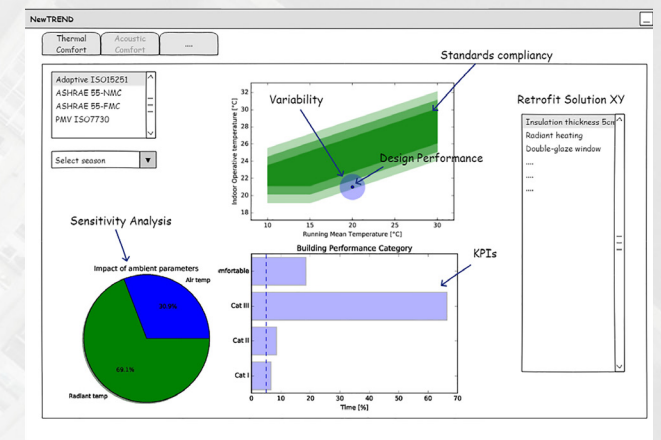
Determination of the optimal acoustic design for occupants' well-being.

User Behavioural Module

Improving simulation outcomes, aids in assessing the best retrofit strategy and reproduces with more accuracy users' behaviours

DIM receives data concerning district and buildings also from the CDP. **Stores securely all the information** entered or processed in various software tools and also the results of dynamic simulations

Thermal Comfort Module



Determination of the optimal thermal design for occupants' well-being. Sensitivity analysis to identify the critical parameters and optimize the retrofit design.



District
Information Model