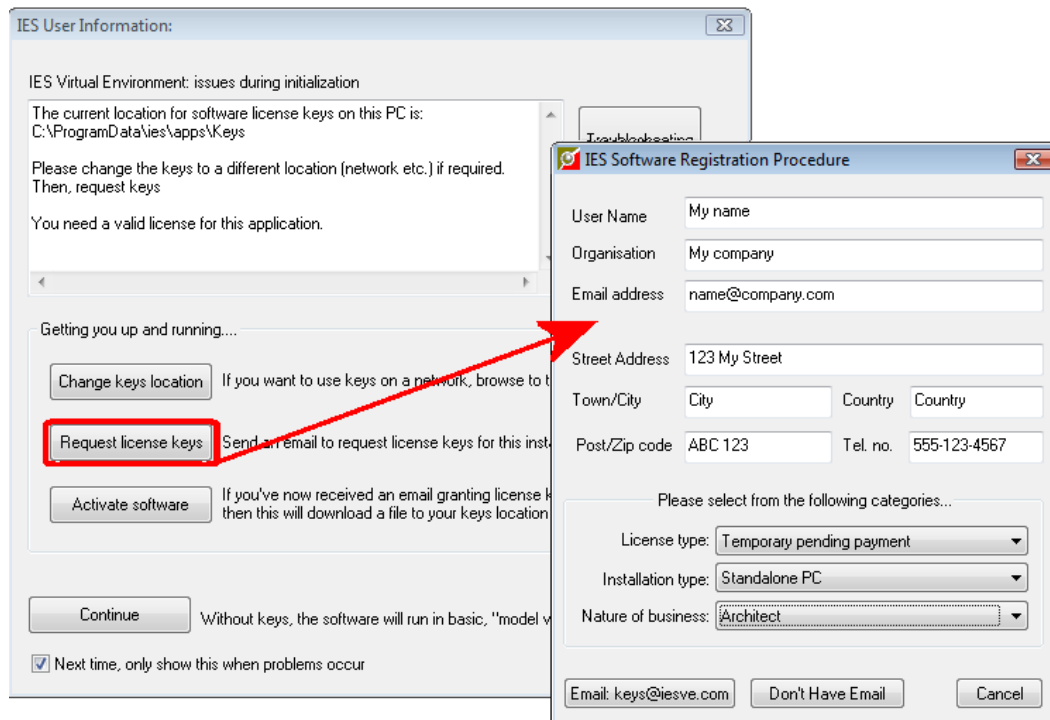
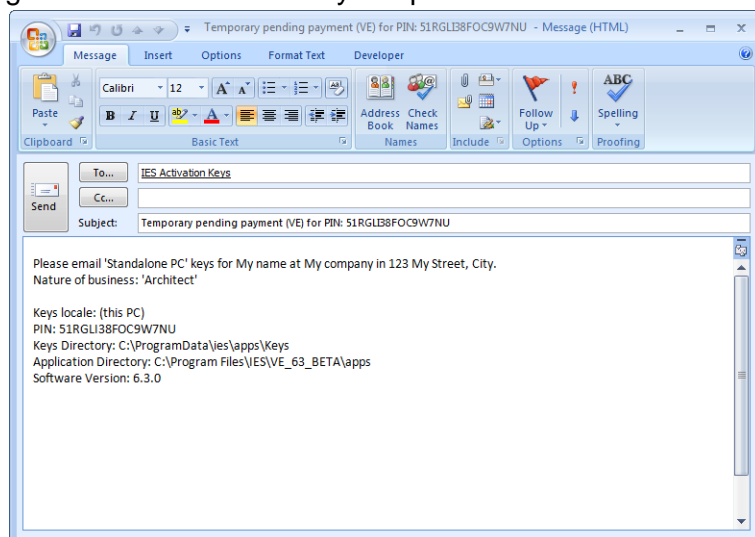


1. Request Licence Keys

The first time you run your software, you will be presented with the IES User Information dialog. It allows you to 'Request License Keys' to register the <Virtual Environment> for your installation.



Register your software and click the button labelled **Email: keys@iesve.com** which will generate an automatic keys request email.



Once the email is sent to keys@iesve.com the team will process the request and send out a confirmation email to you (generally within 1 working day). You are then ready to Activate your software...

2. Activate Software

2.1.1. Receive confirmation email

You will receive an email from our keys department it will read:

“Hi

Your IES <Virtual Environment> software keys are ready for download.

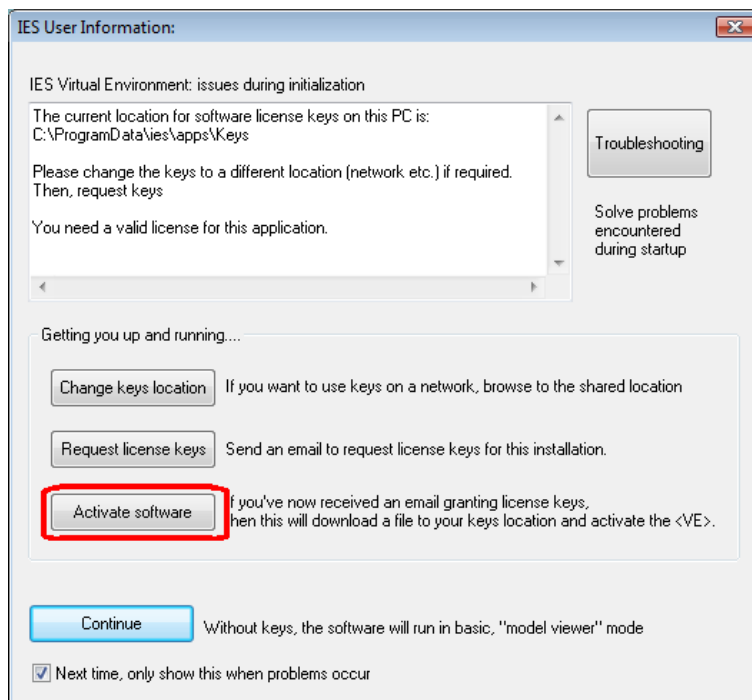
To use the new software keys, please open the <Virtual Environment> and ‘Activate software’ either from the first dialog window or via the VE “Help” >”Activate Software” menu. The keys file will be downloaded and registered onto your pc, enabling you to immediately begin using the <Virtual Environment>.”

If you encounter internet connection problems, you can manually download your keys file to disk by using use the link below:

...

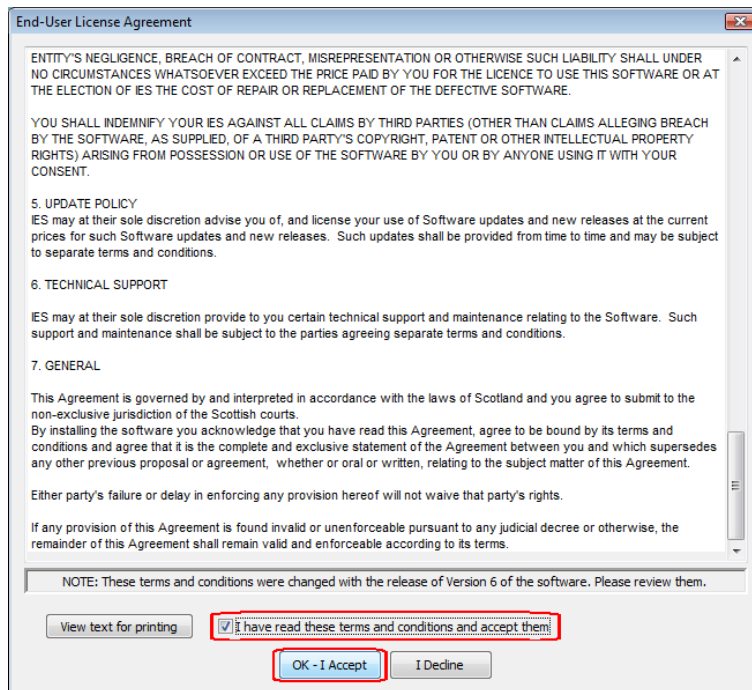
2.1.2. Open Software & Activate

The IES User Information dialog will appear when you open the software. Click ‘Activate software’ in order to register the <Virtual Environment>.



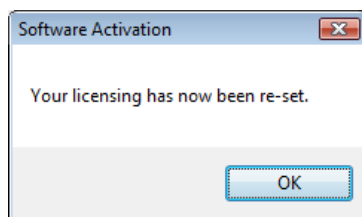
2.1.3. Read and accept license agreement

You will be presented with the End-User License Agreement which you must accept in order to run the software.



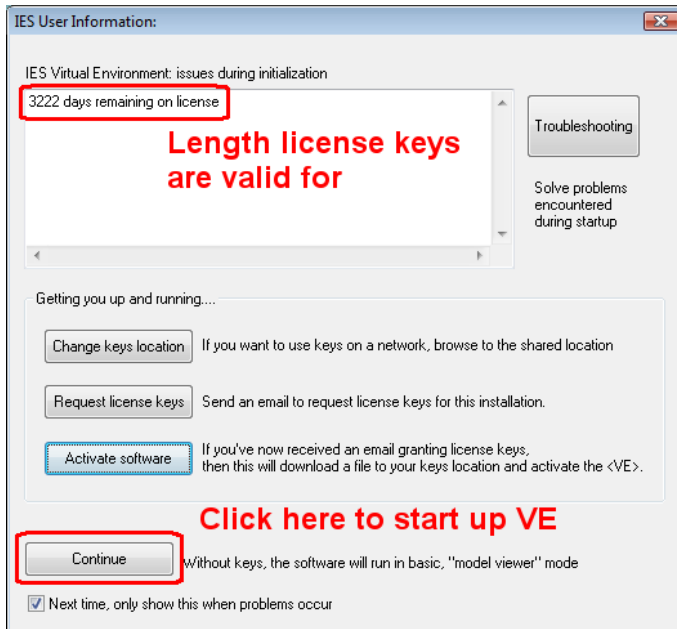
2.1.4. Confirmation message

The following appears to confirm that your license activation has been completed. Please accept and continue.



2.1.5. Check license period and continue to software

At this point the license keys have been downloaded from the IES Server to the local installation and the software can now be run. The window will now show the days remaining on the license and allow you to click **Continue** to launch the VE.



2.1.6. Enter the <Virtual Environment>

The <Virtual Environment> will now start up and we can see your purchased and registered products available to select from the 'Applications' or 'Navigators' tabs.

