



FAQ: Can IESVE Software be used for IRS-Approved Tax Deductions (179D)?

The U.S. Department of Energy has [qualified IESVE Software](#) for 179D Tax Deduction software. There are two important current qualifiers on this document, highlighted below;

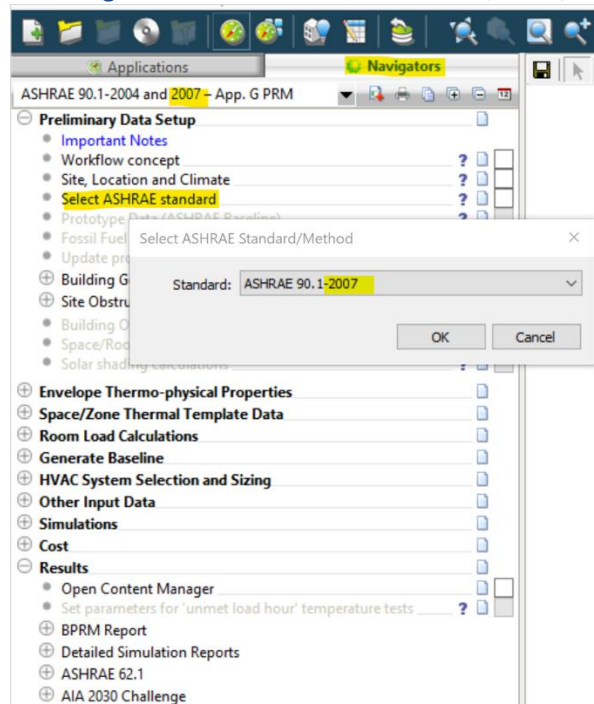
(5) A declaration by the manager in charge of software development, made under penalties of perjury, that all statements and information in the right hand column of this table are true and correct.	On behalf of the IES VE 2022 development team, I certify the following:
(a) The software has been tested according to ANSI/ASHRAE Standard 140-2014 Standard Method of Test for the Evaluation of Building Energy Analysis Computer Programs (except sections 5.2.4, 7, and 8);	The software has been tested according to ANSI/ASHRAE Standard 140-2014 Standard Method of Test for the Evaluation of Building Energy Analysis Computers Programs.
(b) The software can model explicitly ⁽¹⁾ —	The IES Virtual Environment 2022 software (VE 2022) complies with ASHRAE 90.1-2007 and all related requirements below.

1. Additional validation under ASHRAE Standard 140-2014; which IESVE Software has obtained, and [posted results to the IES website](#).
2. A software tool that automates the ASHRAE 90.1-2007 compliance process, which IESVE Software also has included as a VE-Navigator. The software is available [to download here](#).

There is some modeling work involved with setting up a 90.1-2007 energy model for 179D.

1. [Introduction to IESVE Software](#)
2. [ASHRAE 90.1 Compliance with IESVE](#)

IESVE Software automates the following versions of ASHRAE 90.1: 2004, 2007, 2010, 2013, 2016, 2019.



IES Supplier Portal: <https://www.iesve.com/supplier-portal-ve>

www.iesve.com

EUROPE | NORTH AMERICA | ASIA | AUSTRALIA