



# Revit model walls/space imported as a shade

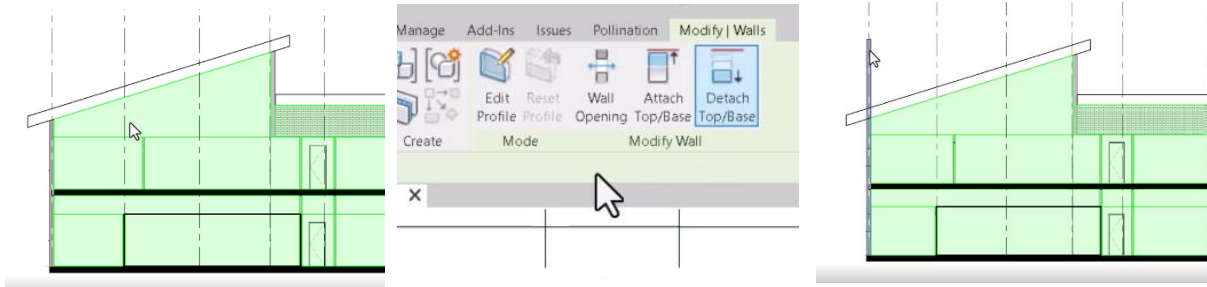
FAQ Document for Users



## Why my Revit model walls/space imported as a shade?

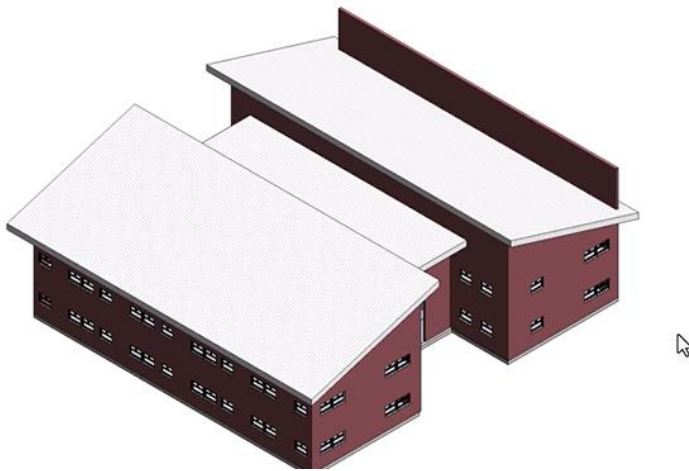
Unattached Floor / Roof

What will happen if a roof or floor is unattached?

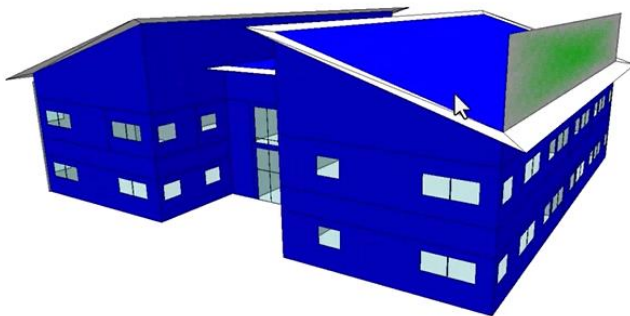


In this model for example, we can detach this wall from the roof, to see how it will extend beyond the roof when the two are not attached.

In the 3D view, it looks like this:



In some cases, it will change the volume, or the volume will “spill over” to outside the space, or in other cases, it may be imported as a shade.



Here we can see it is imported into the IESVE as a shade