



# Revit to IES VE: How to properly set the Area and Volume computations?

FAQ Document for Users



## Revit to IES VE: How to properly set the Area and Volume computations?

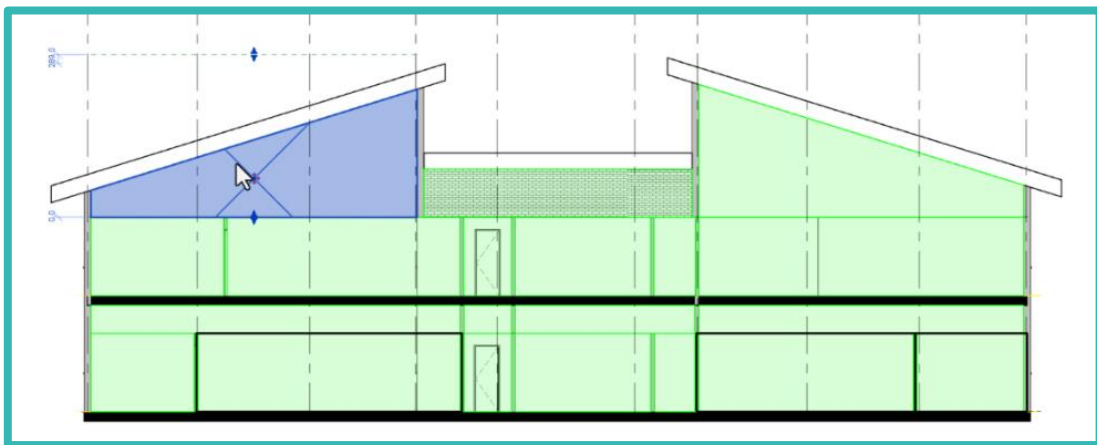
When we are developing the Revit model, we need to consider the Revit settings.

What will happen if the Area and Volume computations are not correctly set?

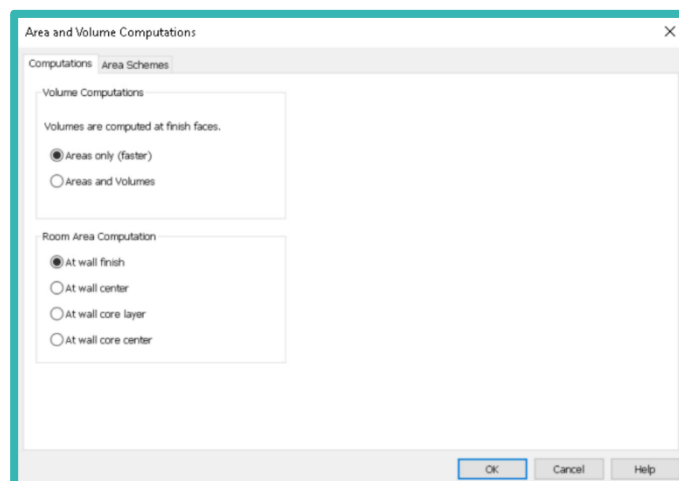
If we look at the *Room & Area* drop-down, using *Area and Volume Computations* opens a dialog box.

On the tab for *Computations*:

- The options chosen will determine the room volume and the room height
- *Volume computations* will affect Revit performance
  - They are turned off by default, with the *Areas only* option selected.
  - Before performing an analysis, it is critical to set this to *Areas and Volumes*
- If this is not set correctly, volumes may be incorrect



For example, when a room with a sloping ceiling is properly defined, we can see in section that the volume of the room terminates at the underside of the roof, because the room bounding elements have been set correctly. This gives the correct room volume.





If the Computations option is changed to *Area only*, rather than *Areas and Volumes*, the volume calculation is effectively turned off, and by default, all rooms are extruded from their plan shape, and are not defined by the room-bounding elements.

We do not want this for importing into the IESVE as our simulations require accurate room volume geometry.