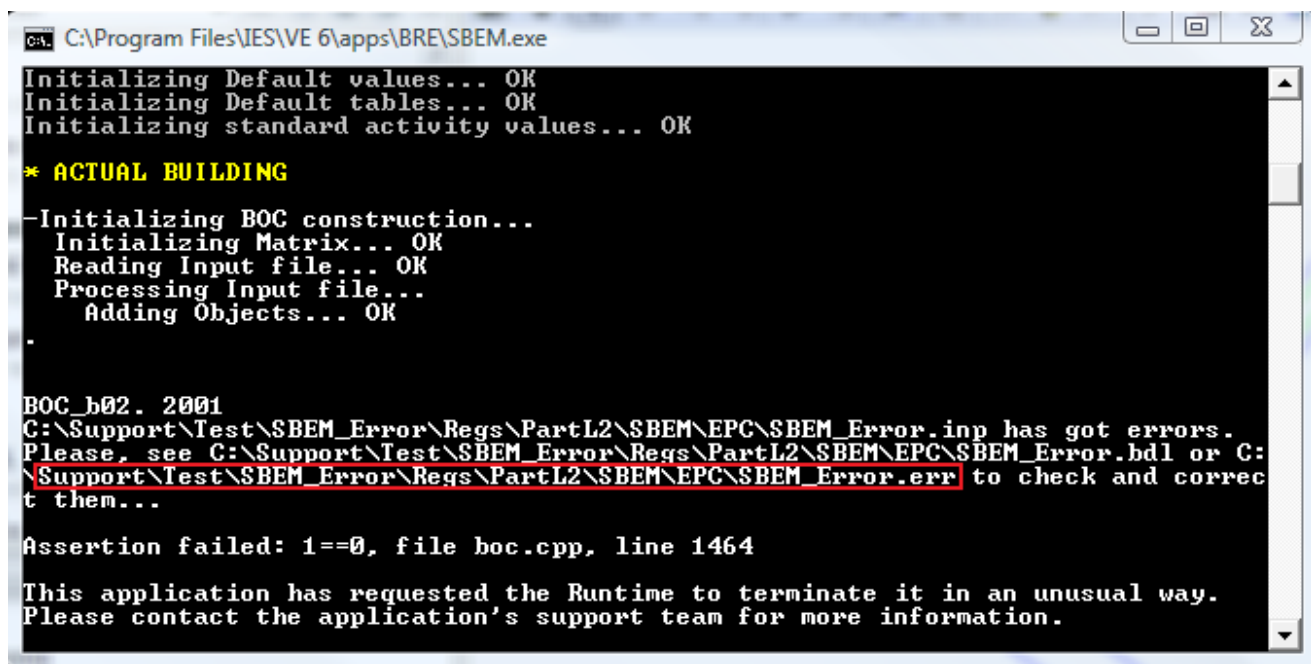


Thermal: VE Compliance
Version: All

Problem: Trying to run simulation in VE Compliance but getting an error

When the following error pops up during a VE Compliance (Apache or SBEM method) simulation it means there are some errors in the simulation input file.

To get to the bottom of the problem we need to look at the error file in the project folder. As you can see from the image below the location of the error file is shown.



```
C:\Program Files\IES\VE 6\apps\BRE\SBEM.exe
Initializing Default values... OK
Initializing Default tables... OK
Initializing standard activity values... OK

* ACTUAL BUILDING

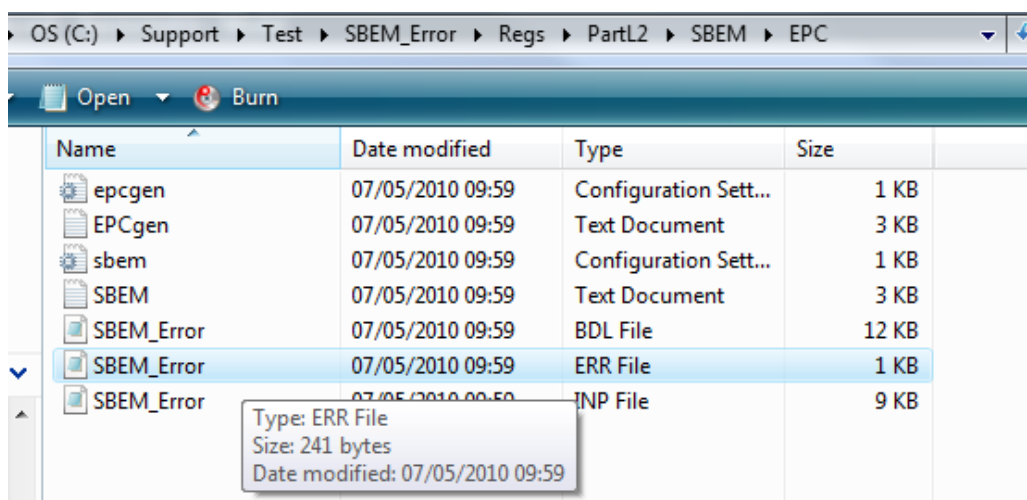
-Initializing BOC construction...
  Initializing Matrix... OK
  Reading Input file... OK
  Processing Input file...
  Adding Objects... OK
.

BOC_b02. 2001
C:\Support\Test\SBEM_Error\Regs\PartL2\SBEM\EPC\SBEM_Error.inp has got errors.
Please, see C:\Support\Test\SBEM_Error\Regs\PartL2\SBEM\EPC\SBEM_Error.bdl or C:
\Support\Test\SBEM_Error\Regs\PartL2\SBEM\EPC\SBEM_Error.err to check and correc
t them...

Assertion failed: 1==0, file boc.cpp, line 1464

This application has requested the Runtime to terminate it in an unusual way.
Please contact the application's support team for more information.
```

Browse to this folder and open the file



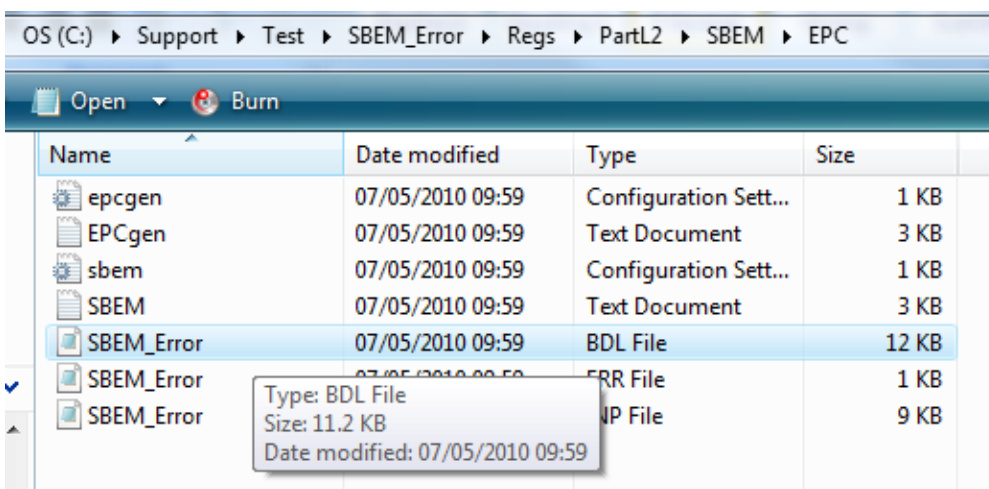
In this example we have one error where zero area is reported. Obviously this isn't a lot to go on so we need to do some digging. Take a note of the line number [102].

```

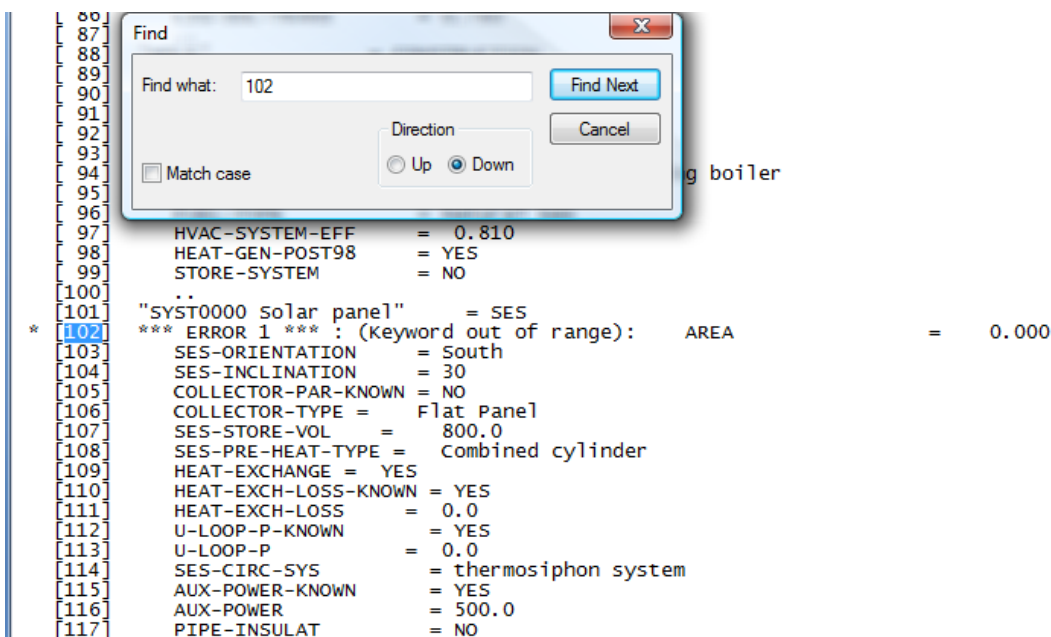
SBEM_Error - Notepad
File Edit Format View Help
* [102] *** ERROR 1 *** : (keyword out of range): AREA = 0.000

*** ERRORS      *** Number of errors: 1
*** WARNINGS    *** Number of warnings: 4
*** CWARNINGS   *** Number of cwarnings: 0
END
  
```

Go back to the folder and open the .BDL file...

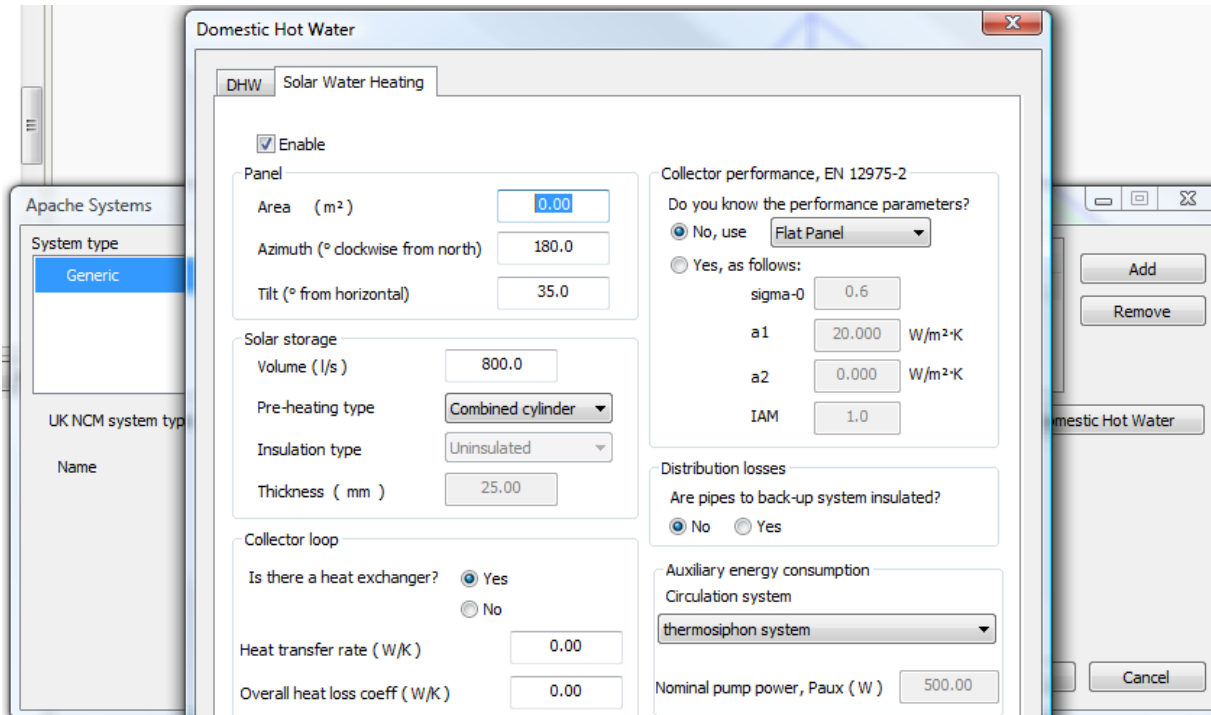


Select [CTRL]+F to open search and look for line 102. This will take it to the area where the error is being reported. On this occasion the problem is an area of 0m² for the SES (Solar Energy System).panel.



To resolve open Apache Systems >Select Domestic Hot Water and then the Solar Water Heating tab.

As you will see the Solar Water heating is enabled but the panel area is 0m². Enter a value and the error won't be reported.



This is just one example. If you find that looking at the error in the .BLD file doesn't provide sufficient information to resolve the issue then please contact the support department and attach the CAB archive, Error file and also the .BLD file.